

54BS573 Kulp-Terra LUCKY CARL ET *TM

840003139216990 aAa: 324 Beta Cas: A2A2 Kappa Casein: BB
Born: 8/26/2016

Proven Sires

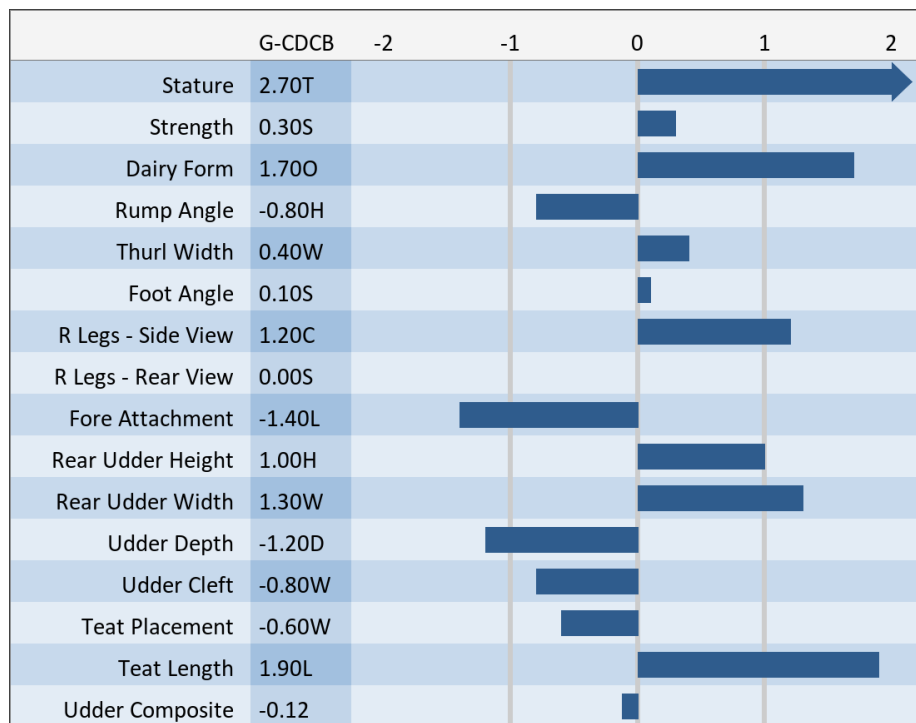
#1 FAT, #2 MILK, #2 PROTEIN, #5 PPR, #5 NM\$, #5 SCR (PROVEN)

GET LUCKY x CARTEL x BROOKINGS

04/2021 G-CDCB PERFORMANCE			
MILK +1924	FAT +67 / -0.05%	PROTEIN +48 / -0.07%	PPR 129
PROD. 83%R 29 DTRS/15 HRDS TYPE 76%R			
PL -1.3	UDC -0.12	SCS 3.01	TYPE +0.30
Milking Speed 93		Conception (SCR) 1.4	
Cow Livability -2.1			
CE 2.8%	NM\$ \$306	DPR -1.6	MOB +0.1

MATING GUIDE	
+ Rump Width + Teat Placement + Size & Strength + Rear Udder Height & Width	- Udder Cleft
Rear Legs- Some Set & Rump Angle- High	

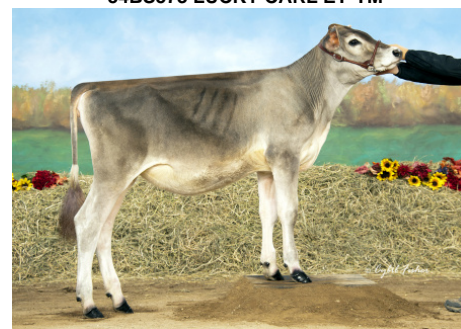
Sire: BMG Lust Get Lucky ET *TM
Dam: Kulp-Terra Cartel Cathy ET "EX-90 EX-90 MS"
2-02 305d 2x 26930 4.5 1208 3.6 978
MGS: Victory Acres Genom Cartel *TM
MGD: Voelkers Brookings Cara "VG-89 EX-90 MS"
2-06 321d 2x 24,779 4.4 1,090 3.5 871



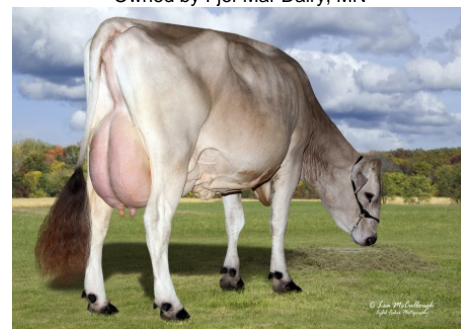
Hilltop Acres Carl Disney
Owned by Hilltop Acres, Iowa



54BS573 LUCKY CARL ET*TM



Fjel-Mar Lucky Carl Fallyn
1st Spring Calf MN State Show, 1999
Owned by Fjel-Mar Dairy, MN



Dam: Kulp-Terra Cartel Cathy ET 'EX 91 EX 91 MS' 2nd Lactation
2-02 365d 2x 31,464 4.5 1,415 3.7 1,152
3-10 365d 2x 34,080 4.2 1,427 3.5 1,207

NEW GENERATION GENETICS

www.brownswiss.com

(920) 568-0554

E-mail: info@brownswiss.com

54BS573 Kulp-Terra
LUCKY CARL ET *TM

840003139216990 aAa: 324 Beta Cas: A2A2 Kappa Casein: BB
Born: 8/26/2016

MATING RECOMMENDATIONS

TOP MATING CHOICES FOR TYPE

1. Diego
2. Daredevil
3. Rasta

TOP MATING CHOICES FOR PPR

1. Jonmar
2. Dario
3. Silver

TOP MATING CHOICES FOR COMBINED COMPONENTS

1. Sandstorm
2. Jonmar
3. Allbright

TOP MATING CHOICES FOR DPR

1. Kade * NP
2. O Malley
3. Jonmar

NEW GENERATION GENETICS

www.brownswiss.com

(920) 568-0554

E-mail: info@brownswiss.com